

The City of Zarahemla

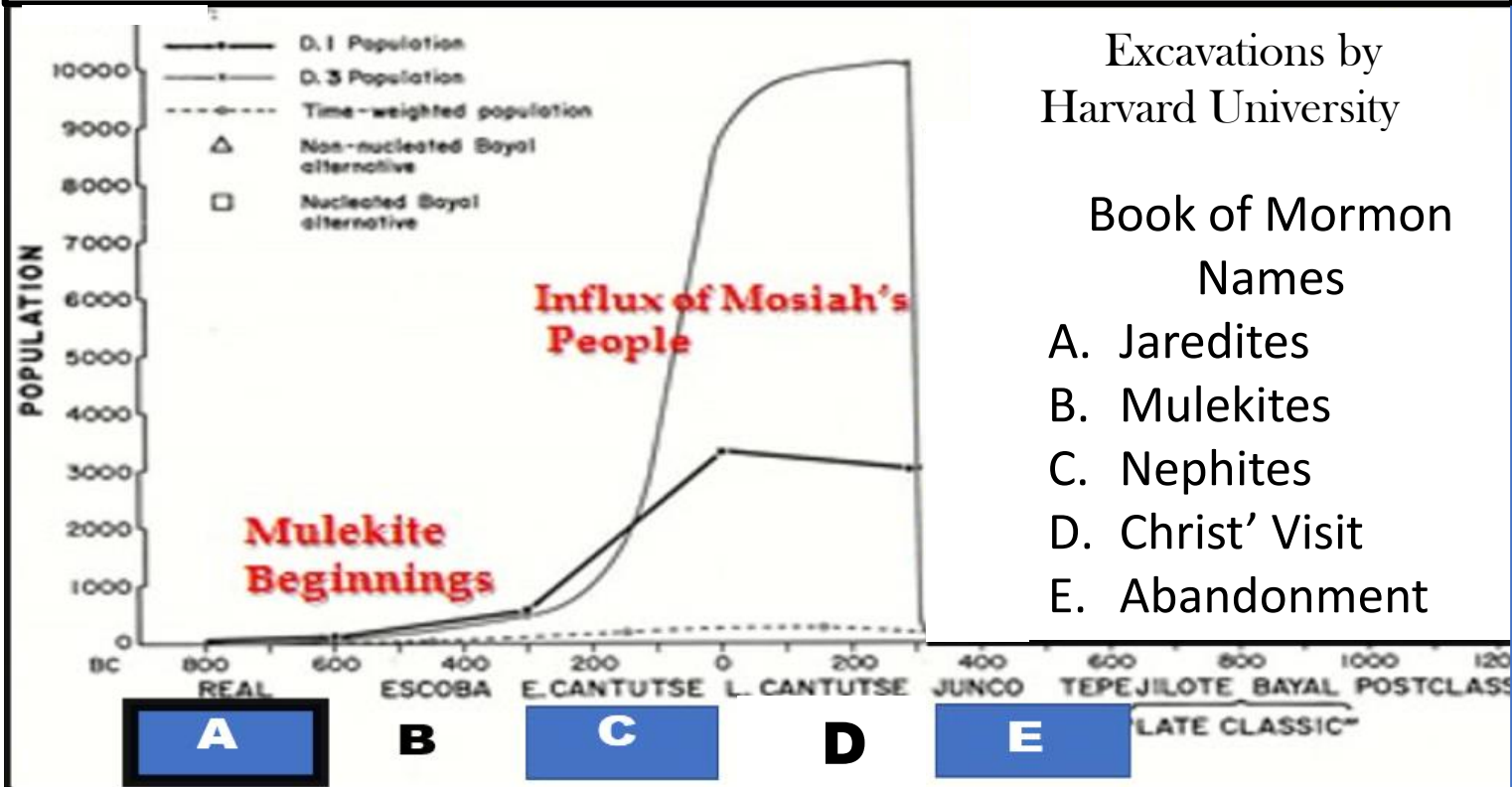
Ceibal
Zarahemla

Evidences of the City of Zarahemla

1. Abandoned in 325
2. Cultural change at the time of Christ
3. Mosiah's influx increase population
4. Started around the time of the Mulekite migration
5. River to the east and running north
6. Well fortified
7. Numerous sacred sectors
8. Two sectors (1) Mulekite (2) Mosiah's people
9. Likely Location of Hill Manti
10. East of the land of Melek
11. West of hill Amnihu
12. In the center of the land
13. Correlates well with land of Nephi
14. Likely location of Nephi's tower
15. Correlates well with Antionum
16. Correlates well with land of Bountiful
17. Steep riverbanks facilities the piling of Lamanite bodes

Explanations will be cover with the subsequent slides

Book of Mormon Timeline at Ceibal – *Zarahemla*



Land of Zarahemla

27 Triangulation Points for the City of Zarahemla



City of Zarahemla Model



Lidar Aerial Ceibal - Zarahemla

Hill Manti

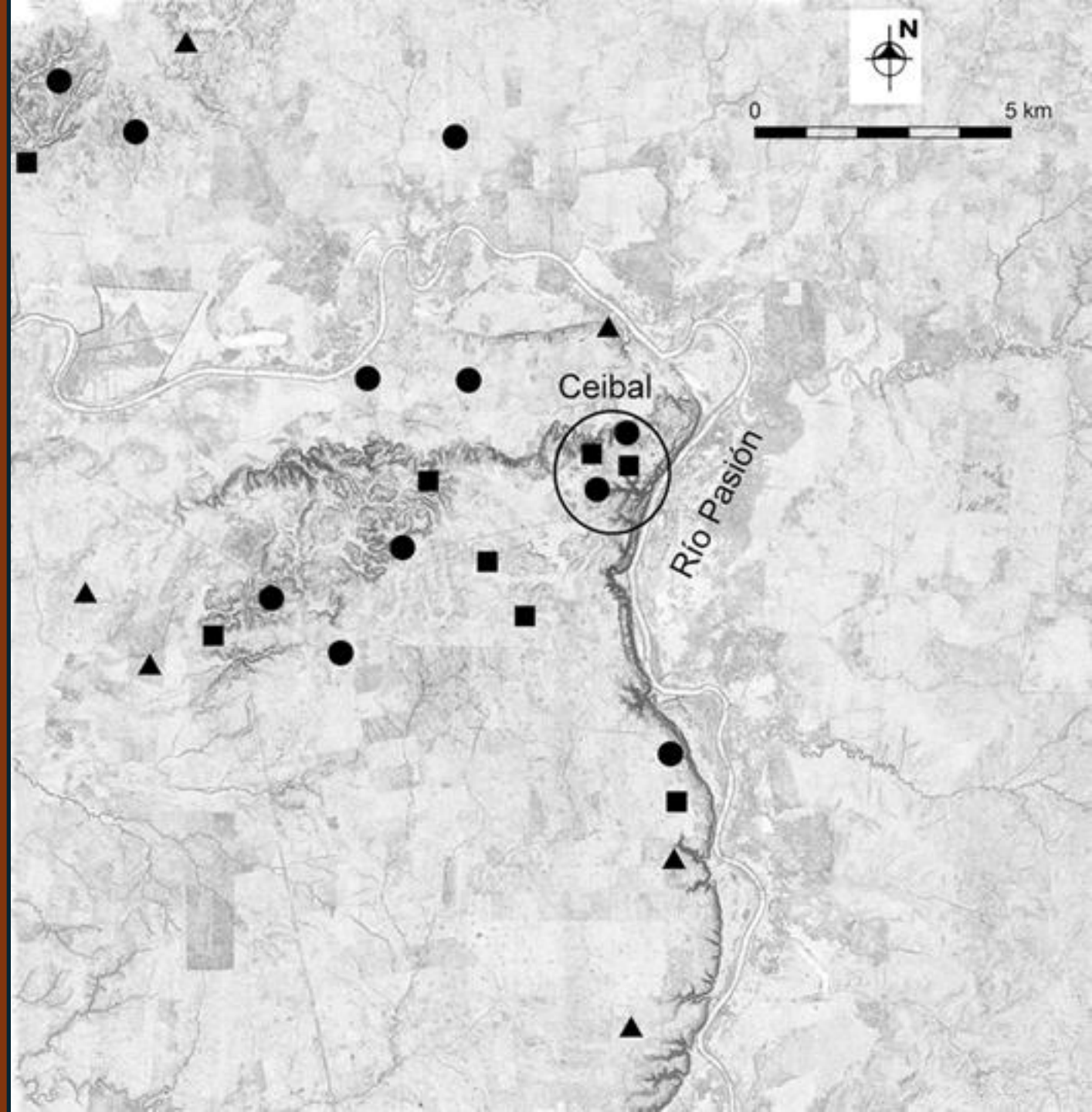
Fortifications

Pasión - Sidon River

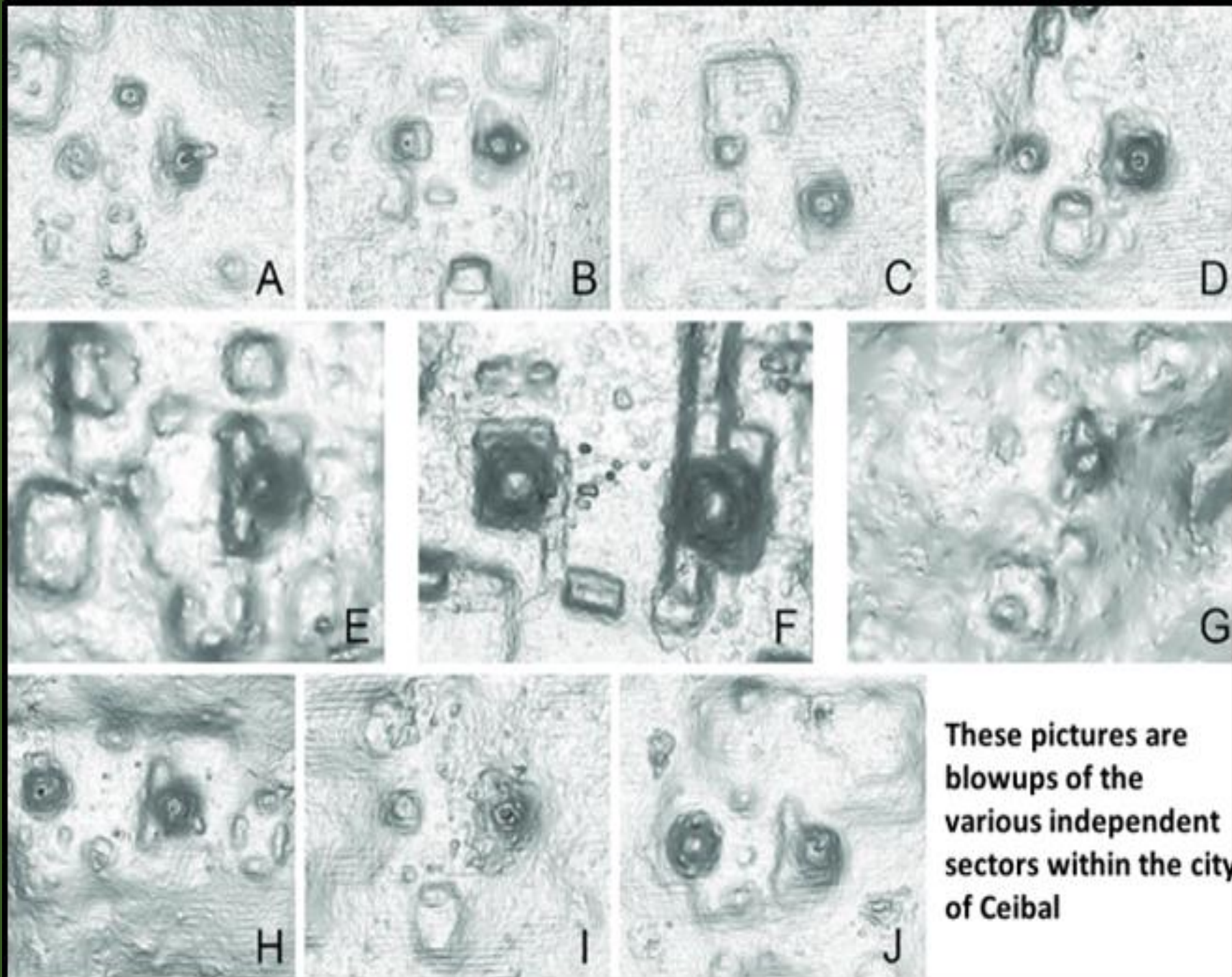


Sacred Sectors

The black entities on the map to the right have designated as E Groups and are also considered to have neighborhood functions that are of a spiritual nature. Some researchers have actually described them as wards.



The triatic
nature of these
structures
could have a
spiritual
connotation



**These pictures are
blowups of the
various independent
sectors within the city
of Ceibal**

Mosiah 25: And now all the people of Nephi were assembled together, and also all the people of Zarahemla, and they were gathered together in two bodies.



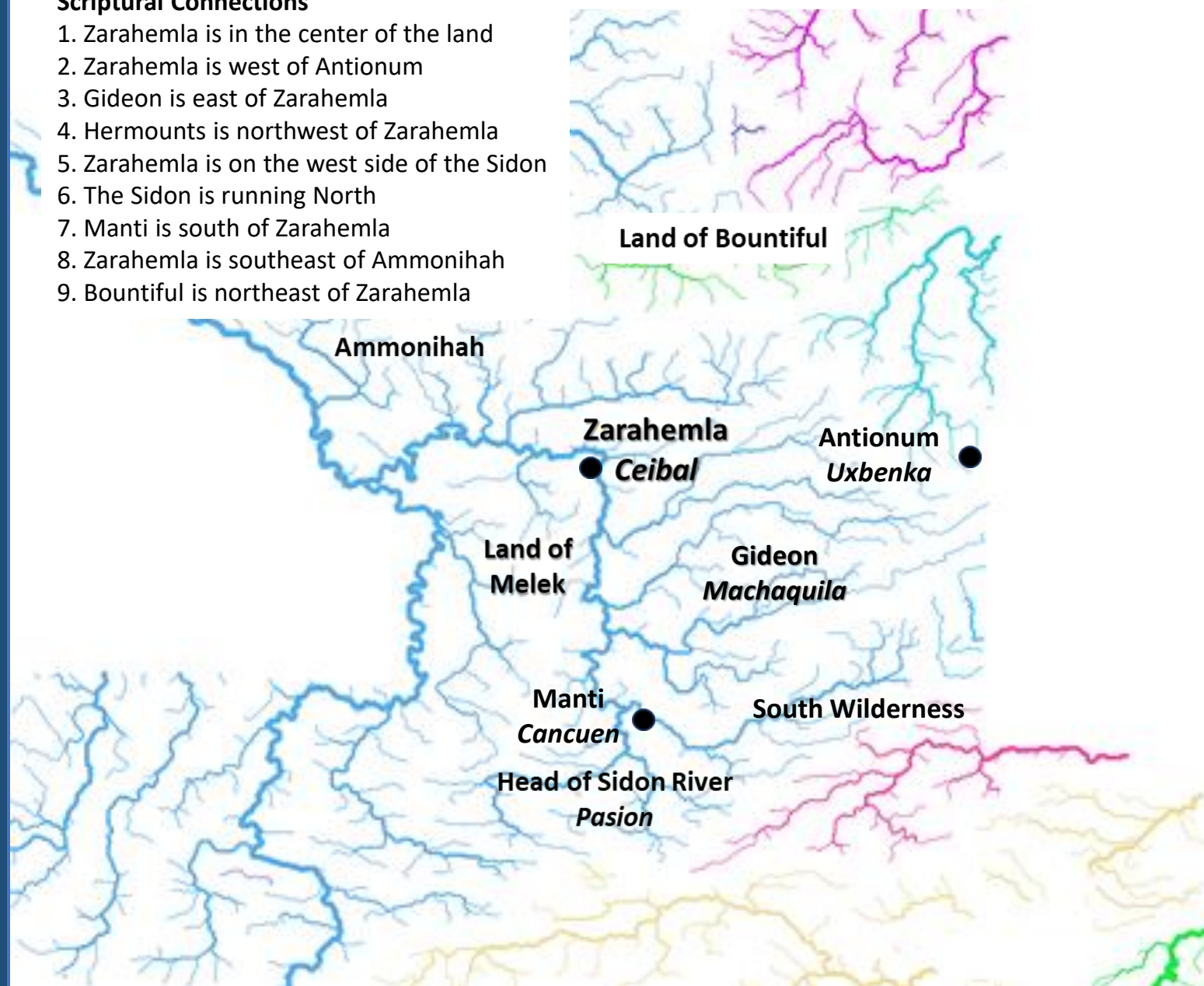
River is east of Zarahemla and is running north

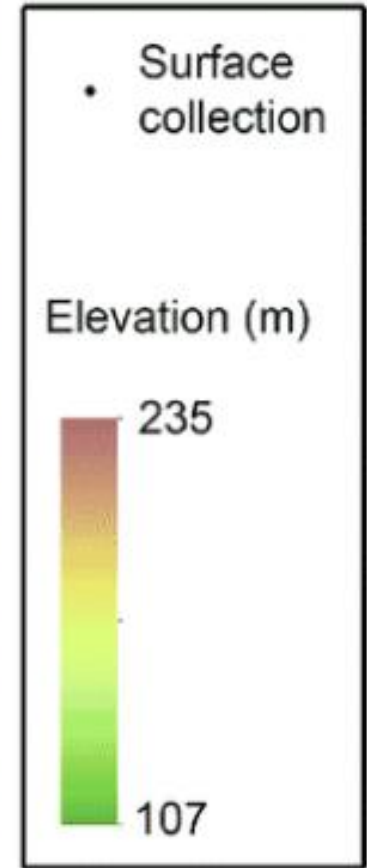
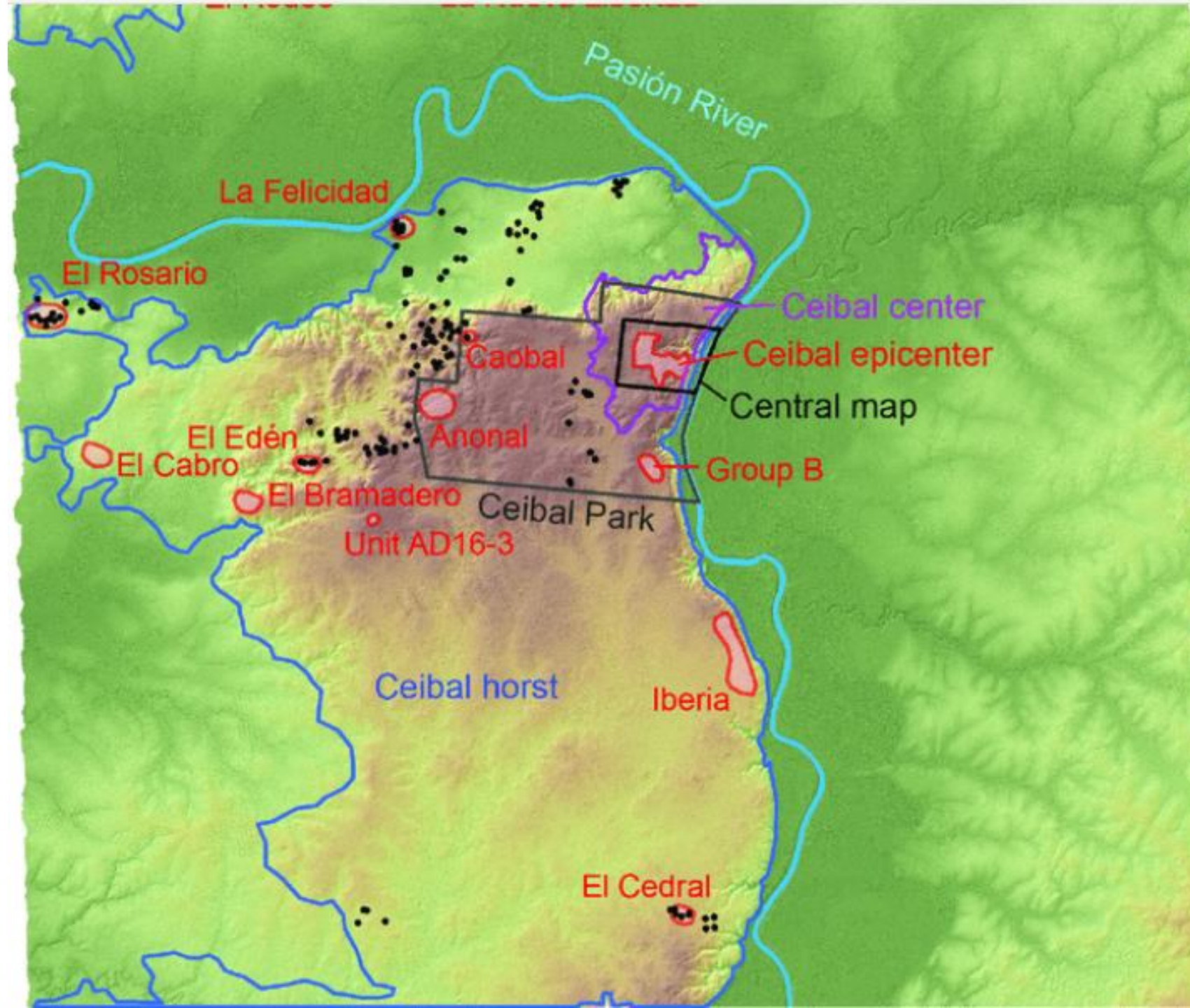
Hermounts

Scriptural Connections

1. Zarahemla is in the center of the land
2. Zarahemla is west of Antionum
3. Gideon is east of Zarahemla
4. Hermounts is northwest of Zarahemla
5. Zarahemla is on the west side of the Sidon
6. The Sidon is running North
7. Manti is south of Zarahemla
8. Zarahemla is southeast of Ammonihah
9. Bountiful is northeast of Zarahemla

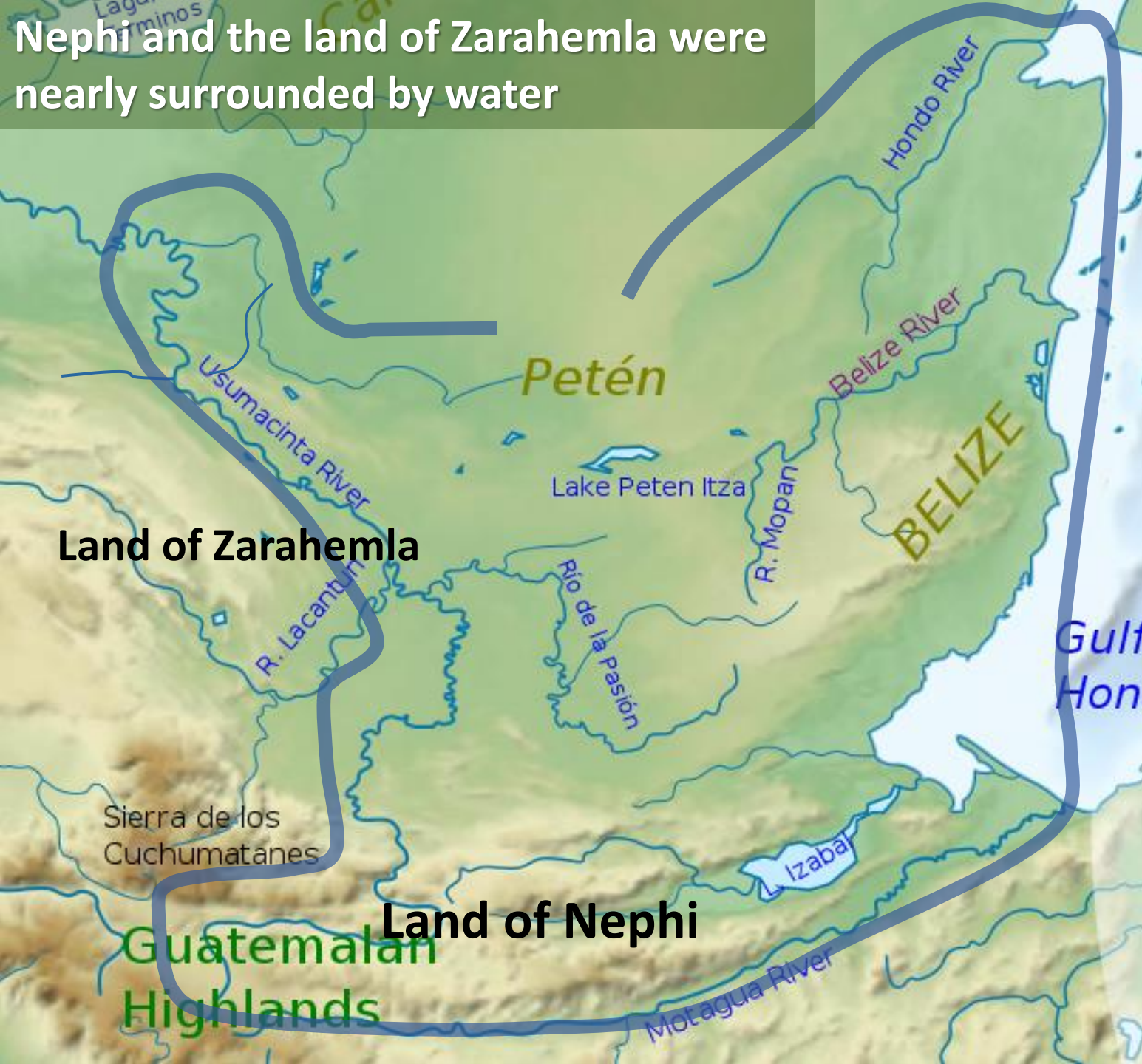
Locations that Triangulate with the City of Zarahemla





Water from rivers, lakes, streams and oceans nearly come together at the narrow neck and at a location in southern land of Nephi

Alma 22:32the land of Nephi and the land of Zarahemla were nearly surrounded by water, there being a small neck of land between the land northward and the land southward.



Similarities in the positioning of Nephite cities in the Sidon River Basin

