

The Land of Bountiful



The city of Belize is one of the most correlated cities that is associated with Pasion River Model. The following is a list of the correlations:

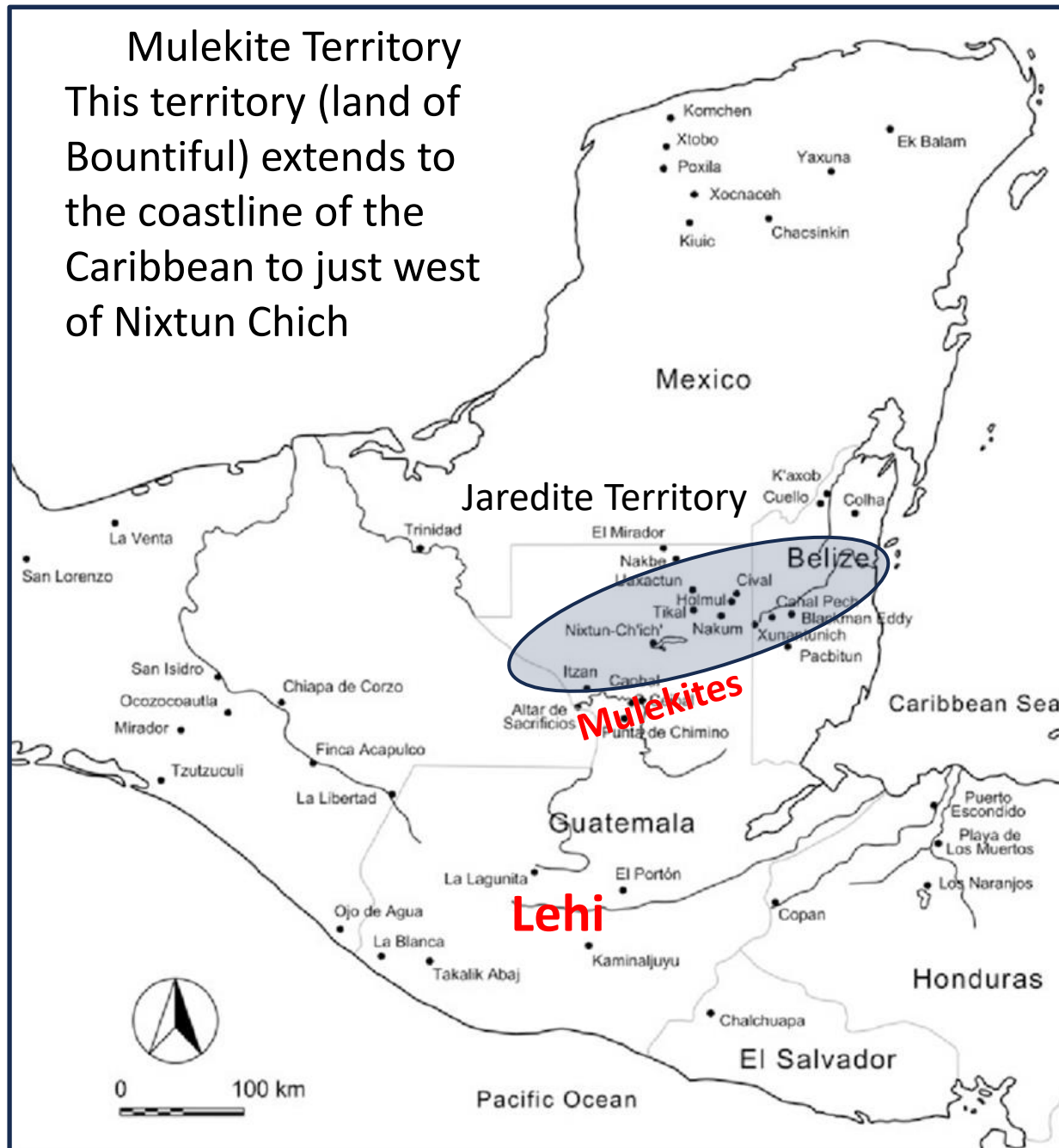
- The ancient location of Holmz (Belize City) was the likely landing location for the Mulekites. This is due the favorable Caribbean ocean currents. Another reason for the landing location was due an effort to avoid a highly populated areas of the Maya (Jaredites) and Olmecs civilizations. In addition, Belize City is located at the mouth of Belize river, a place of fresh water and a transportation route to inner Belize.
- It is likely that the Mulekites would name the landing location after Mulek their leader.
- The Book of Mormon has a long list of coastal cities that correlate with the City of Bountiful and the City of Mulek. Both are on the north end of the list and are near the sea east and within a day or two march between them. This allows the city of Bountiful to be near the Narrow Neck of Land.
- The land of Mulekites begins at the mouth of the Belize river and extends inland similar to the land of Bountiful. It is understandable why they would populate the Land of Bountiful because of all the water systems, fertile soils and a favorable climate.

The Land of Bountiful



Those sites within the blue ring are below the Narrow Neck in the Land Southward and emerged during the Mulekite expansion.

The Jaredites used the land south of the Narrow Neck for a hunting preserve, This undoubtedly caused some friction between the two entities as described in Omni 1:17



City of Bountiful

Altun Ha

Possible Fortifications



"... The pierced hand glyph is probably the most powerful evidence from Mesoamerican archaeology [SEP] of the visitation of the resurrected Messiah to the Nephites!"

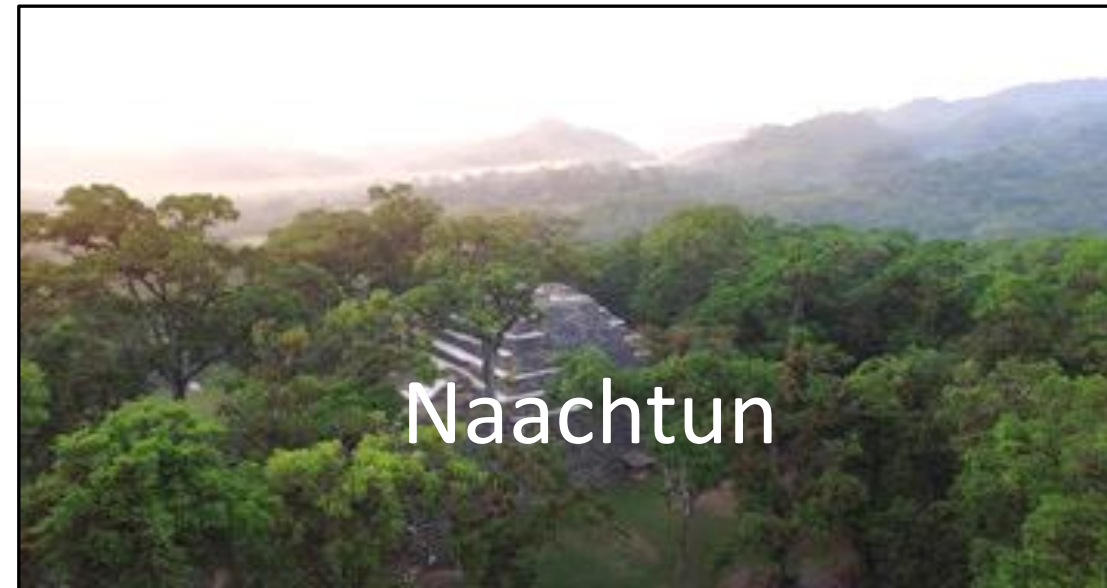
It is interesting that most of the glyphs with holes in hands are located near the location where the Pasion River Model estimates the place where Christ came.

Linda Schele stated the following;
 "...the drops most often represent
 blood...now we know the sign is ch'ul.
 As a term for "holiness..." (Linda
 Schele, Workbook for the XVIth Maya
 Hieroglyphic Workshop at Texas,
 March 14-15, 1992, p. 39, 41, 42, 61)

Christ's Hands in Maya Land



Possible Locations for Christs Visit

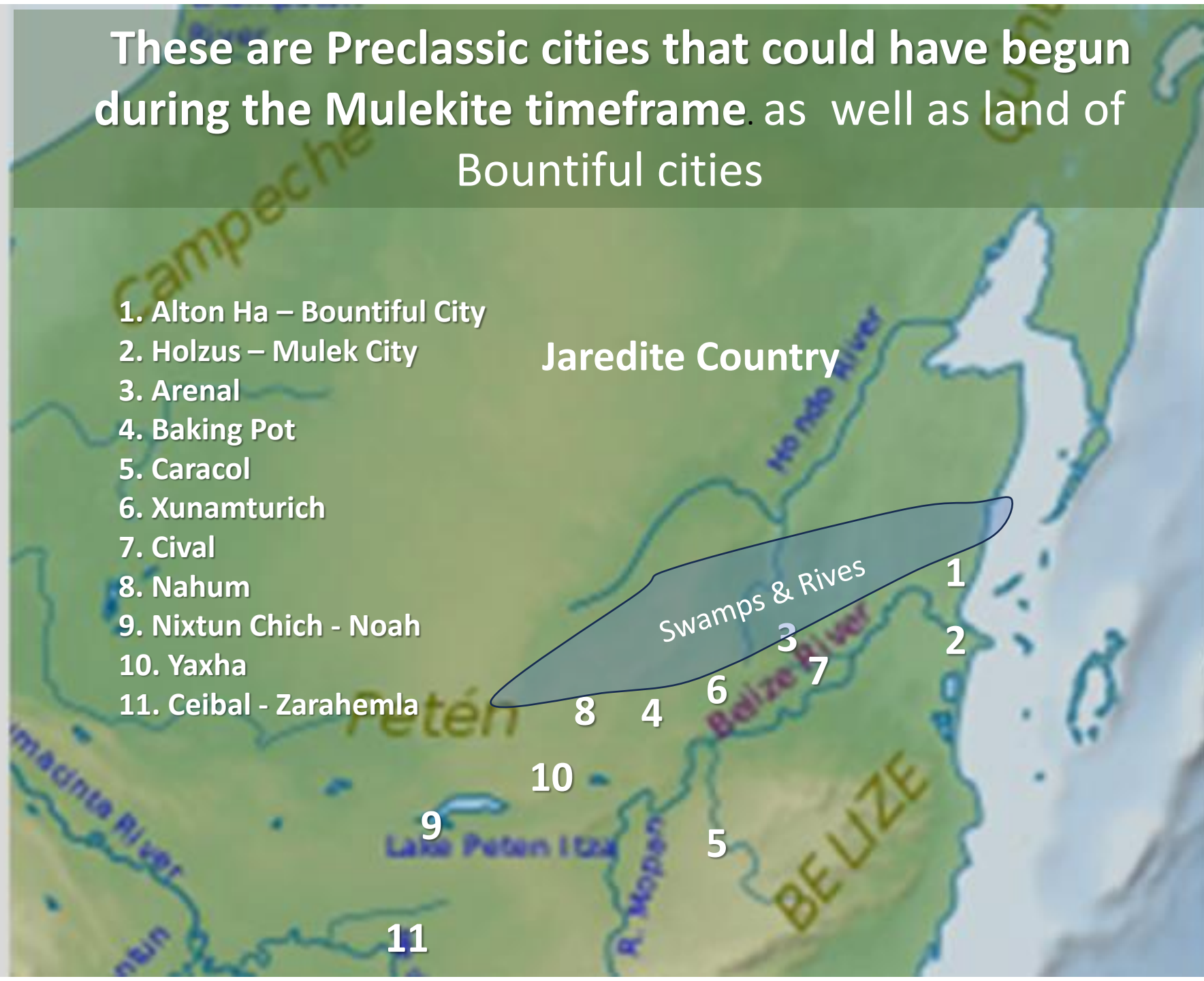


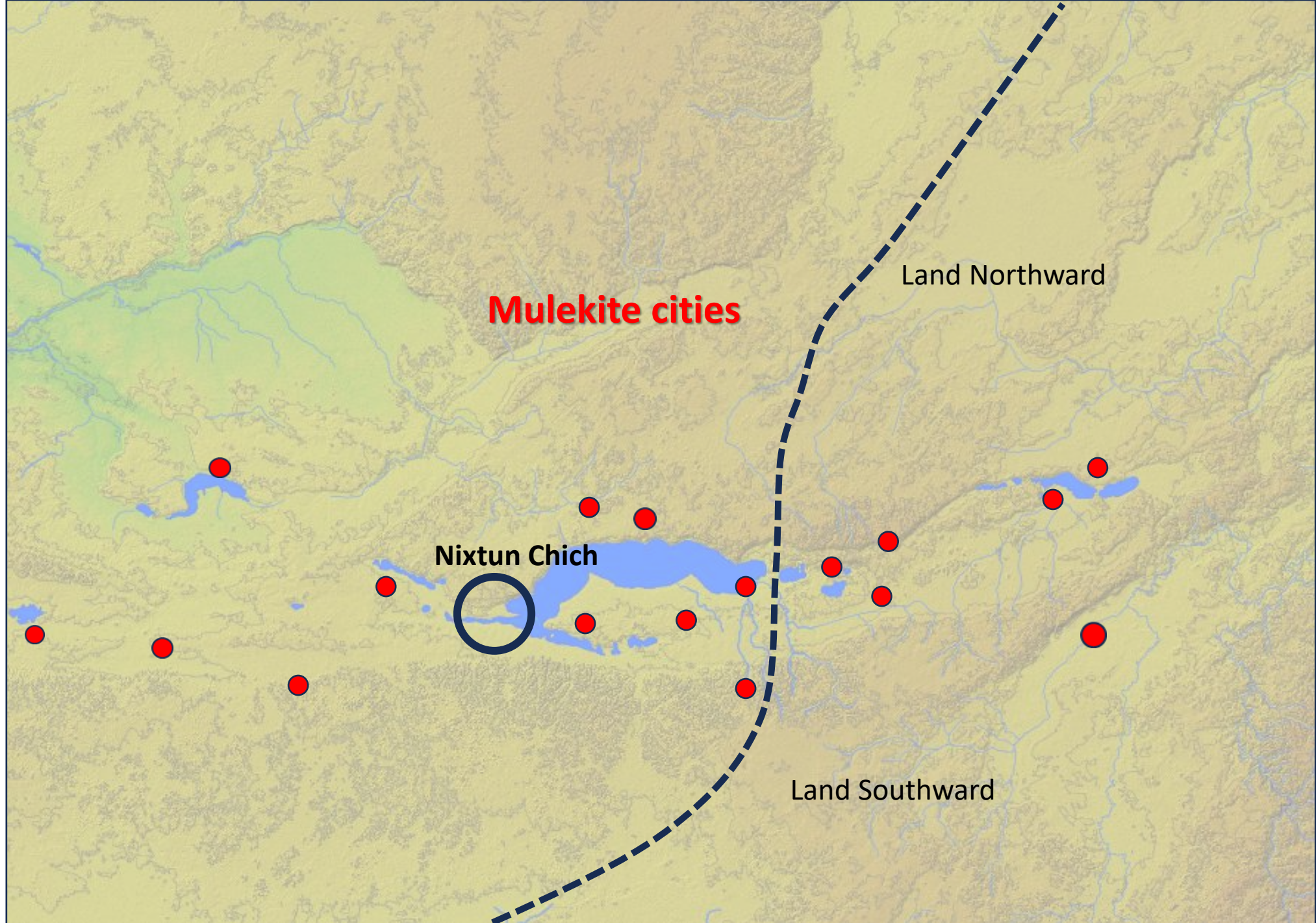
These are Preclassic cities that could have begun during the Mulekite timeframe as well as land of Bountiful cities

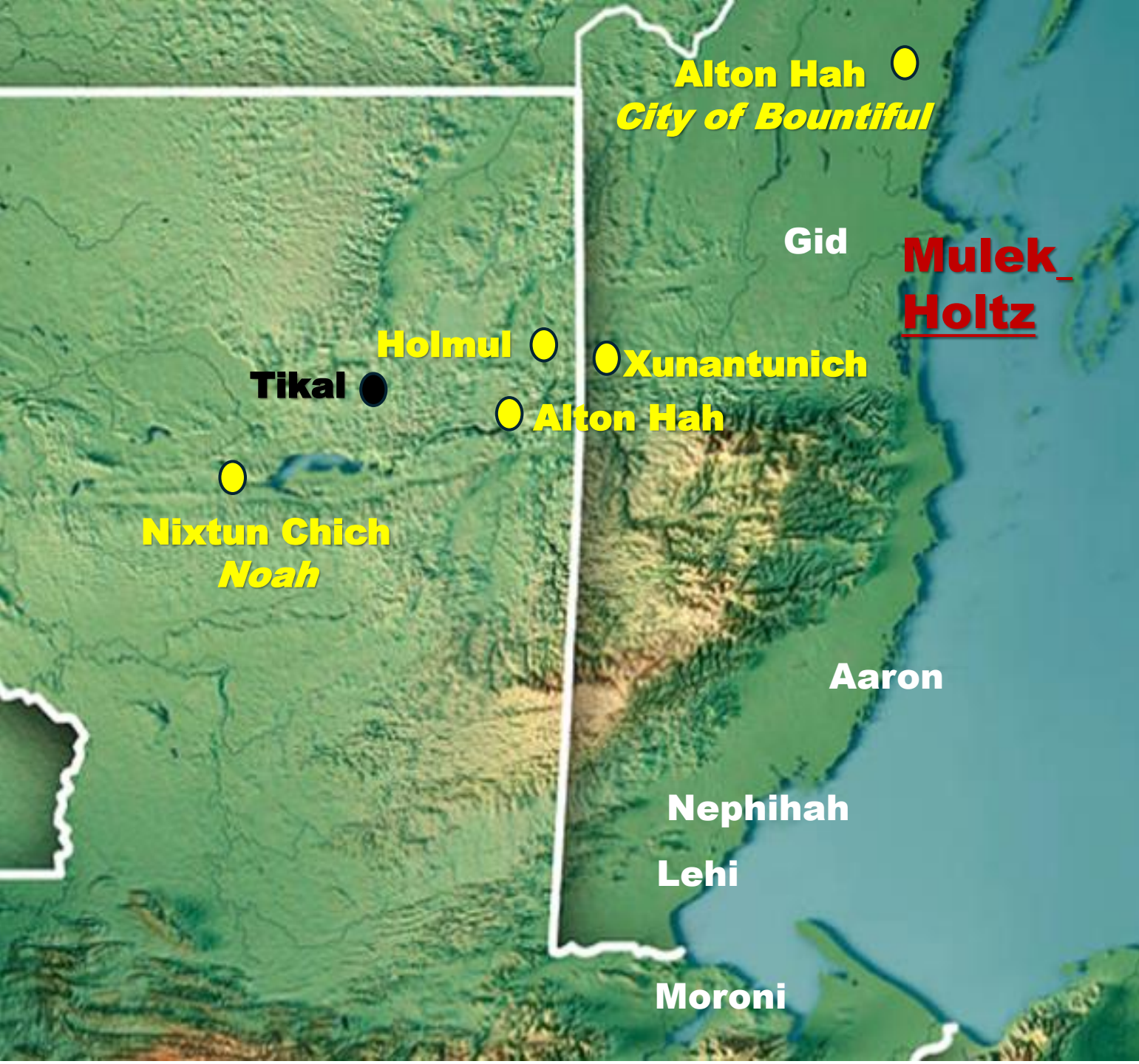
1. Alton Ha – Bountiful City
2. Holzus – Mulek City
3. Arenal
4. Baking Pot
5. Caracol
6. Xunamturich
7. Cival
8. Nahum
9. Nixtun Chich - Noah
10. Yaxha
11. Ceibal - Zarahemla

Jaredite Country

Swamps & Rives







Helaman 5:14-...Beginning at the city of Bountiful 15 And from thenceforth to the city of Gid; and from the city of Gid to the city of Mulek.

Alma 50:13...the city Moroni; was by the east sea; and it was on the south by the line of the possessions of the Lamanites. Alma 50:14 and the city of Moroni and the city of Aaron, and the city Nephihah.

Alma 51:24 And those who fled out of the city of Moroni came to the city of Nephihah; and the city of Lehi Alma.

62:18...when they had come to the city of Nephihah, they did pitch their tents in the plains of Nephihah, which is near the city of Nephihah...

Jaredite Territory Land Northward

●
Mulek City
Belize city -Holzus

Mulekite settlements along the Belize River
and its tributaries

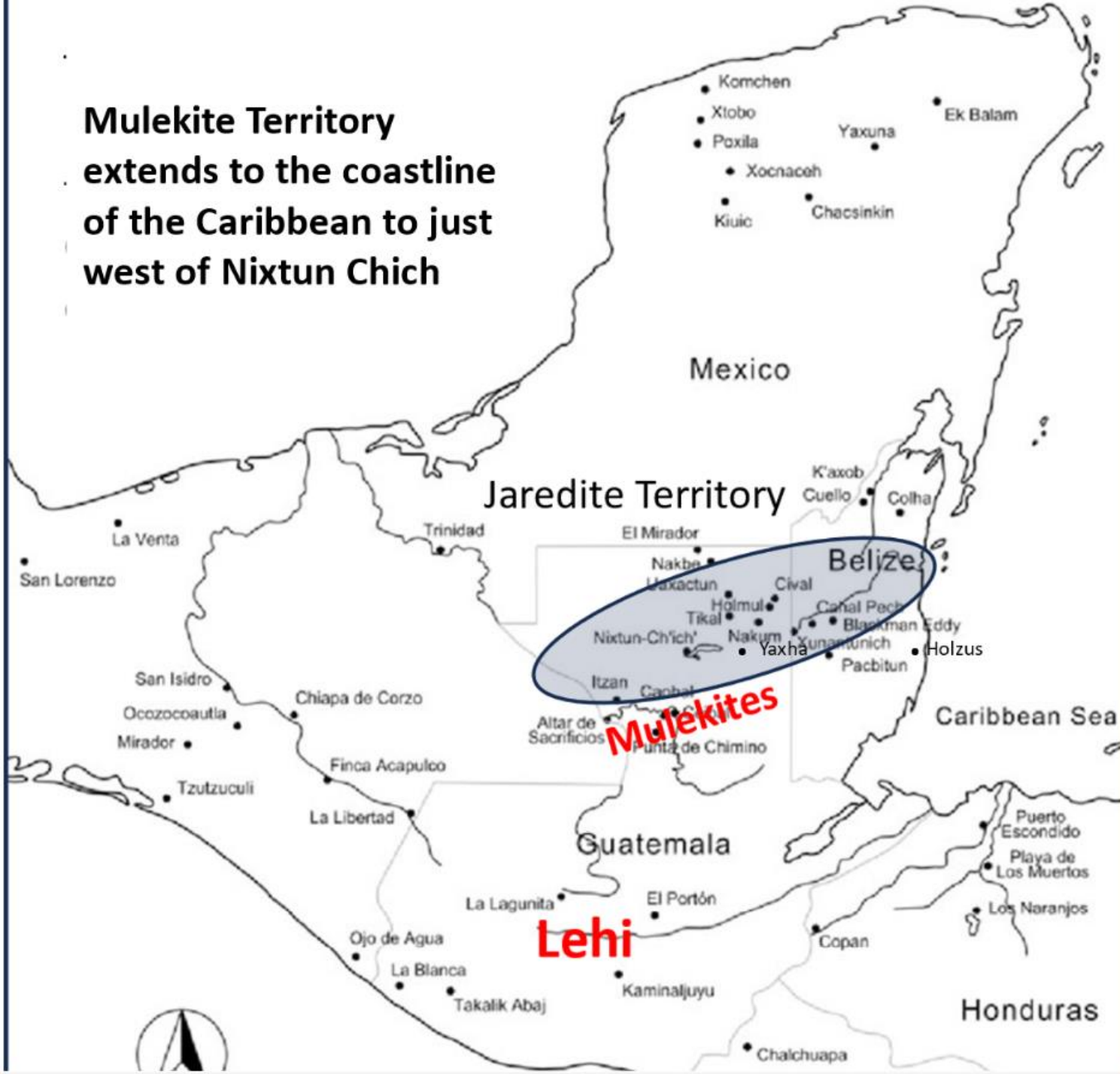
It's likely the Mulekites
oceanic arrival location would
have been named after their
leader.

In the positioning of the
Coastal Cities, Mulek City, is
placed at or near Belize City
(Holzus)

Zarahemla

A

**Mulekite Territory
extends to the coastline
of the Caribbean to just
west of Nixtun Chich**



The Mulekites elected to avoid the Jaredites in the north country by settling in land south of the Narrow Neck. This is also generally known as the land of Bountiful.

The contentions mention in Omi 1:17 were likely due to the Mulekites encroachment upon the Jaredite game preserve. Eter 10:24

Omni 1:16 And they journeyed in the wilderness and were brought by the hand of the Lord across the great waters, into the land where Mosiah discovered them; and they had dwelt there from that time forth.

Omni 1:

17 And at the time that Mosiah discovered them, they had become exceedingly numerous. Nevertheless, they had had many wars and serious contentions, and had fallen by the sword from time to time;